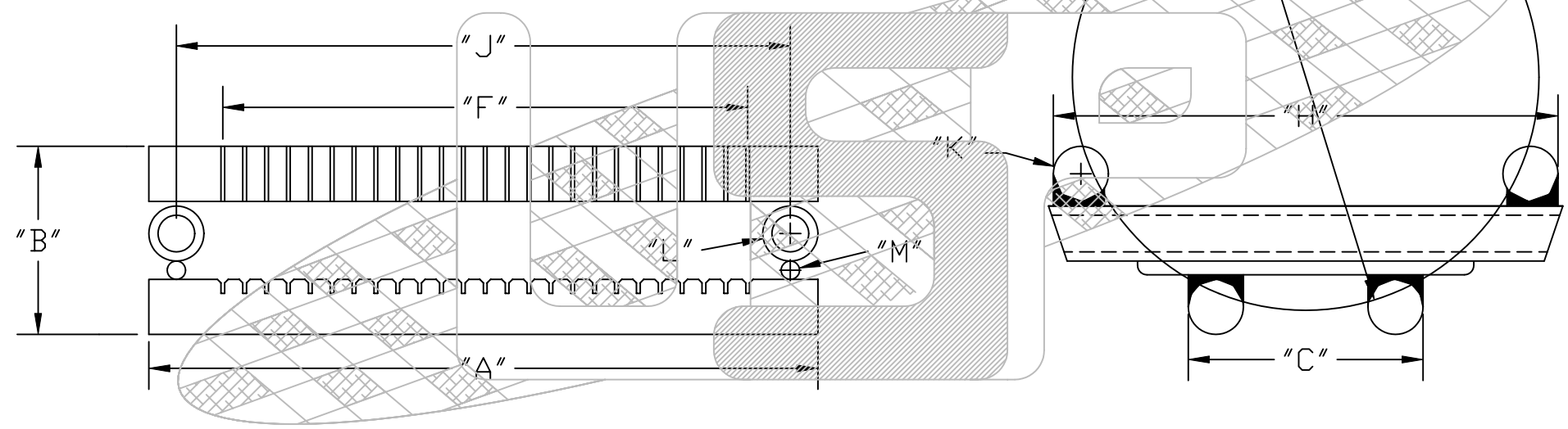
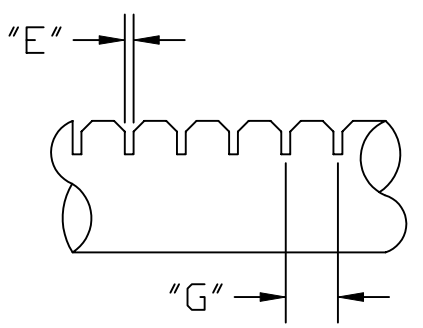


QUARTZ WAFER CARRIERS

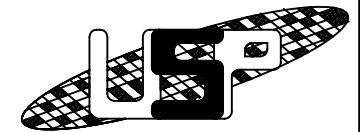
Below is a series of quartz wafer carrier configurations that may suit your needs. Simply print the desired drawing and fill in the dimensions that meet your requirements, then fax or email it to us for review and quote. Remember, this is just a small sample of the products that we can fabricate. Call and discuss your specific requirements with our engineering department.

<u>PAGE</u>	<u>DESCRIPTION</u>
2	LOW PROFILE BOAT
3	HIGH PROFILE BOAT
4	SOLID SOURCE BOAT
5	STRAP BOAT
6	SHELL BOAT

REVISIONS			
ZONE	REV.	DESCRIPTION	APPROVED DATE



AUTOMATIC TRANSFER YES NO

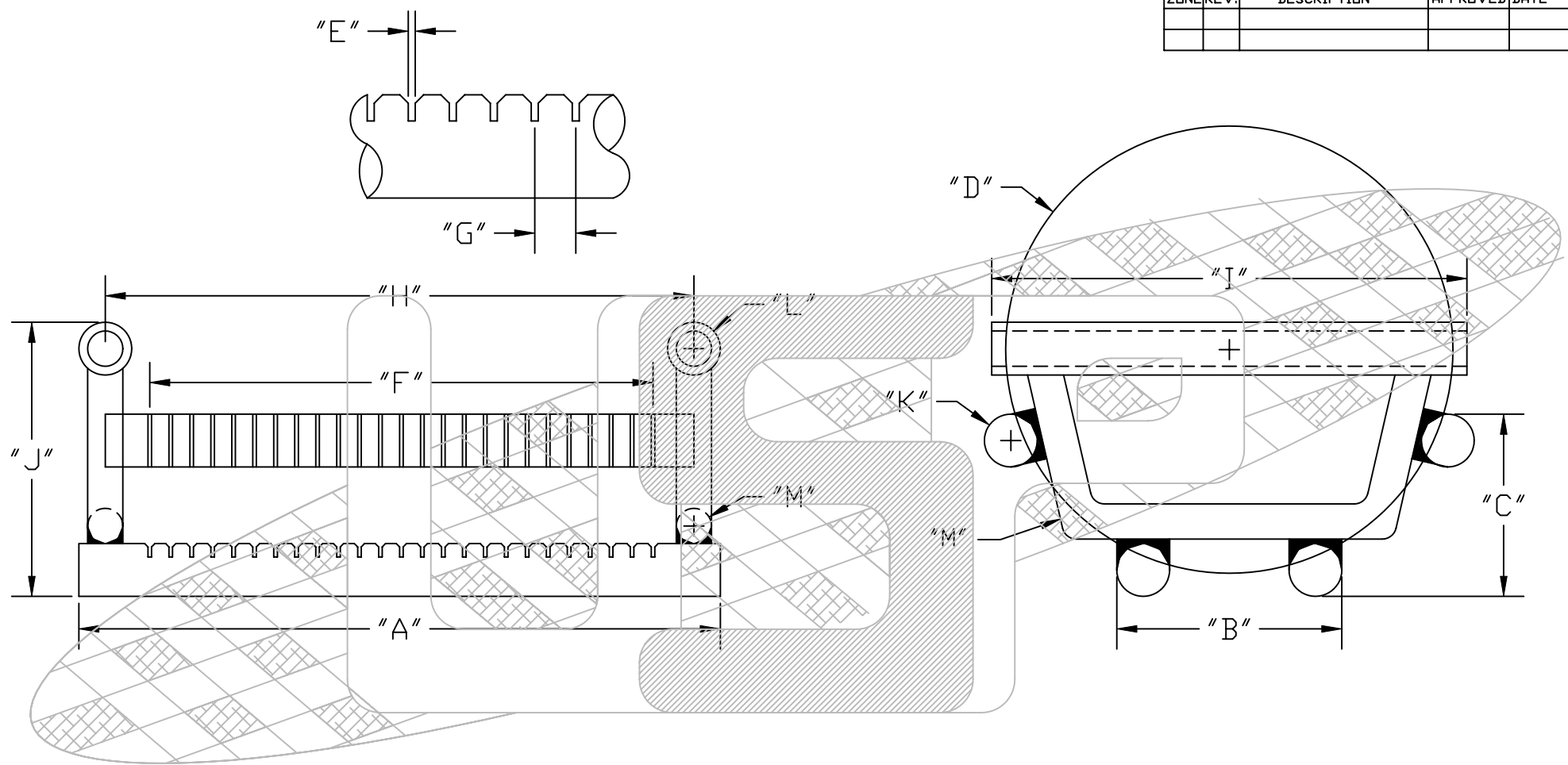


"A"	"B"	"C"	"D"	"E"	"F"
"G"	"H"	"I"	WAFER ϕ	SLOT WIDTH	# OF SLOTS
CEN TO CEN	"M"		"J"	"K"	"L"
ROD ϕ				ROD ϕ	TUBE ϕ

TOLERANCES	
DECIMAL INCHES	MILLIMETERS
X.X = +/- .050	X = +/- 1
X.XX = +/- .010	X.X = +/- .5
X.XXX = +/- .005	X.XX = +/- .15
ANGULARITY +/- 1°	
PROPRIETARY	
<small>THE INFORMATION CONTAINED HEREIN IS THE PROPERTY OF UNITED SILICA PRODUCTS INC., AND MAY NOT BE REPRODUCED OR DISCLOSED IN WHOLE OR IN PART WITHOUT THE WRITTEN PERMISSION OF UNITED SILICA PRODUCTS INC.</small>	

UNITED SILICA PRODUCTS, INC. 3 PARK DRIVE, FRANKLIN, NEW JERSEY 07416 PH (973) 209-8854 FAX (973) 209-8864 E-MAIL quartzsales@unitedsilica.com		
TITLE LOW PROFILE		
CUST.	DWG NO.	REV.
MATERIAL		DRAWN BY
SCALE NONE		APPROVED BY
SHEET	DATE	

REVISIONS			
ZONE	REV.	DESCRIPTION	APPROVED DATE



AUTOMATIC TRANSFER YES NO



"A"	"B"	"C"	"D"	"E"	"F"
"G"	"H"	"I"	"J"	"K"	"L"
CEN TO CEN			WAFER ϕ	SLOT WIDTH	# OF SLOTS
"M"				ROD ϕ	TUBE ϕ
ROD ϕ					

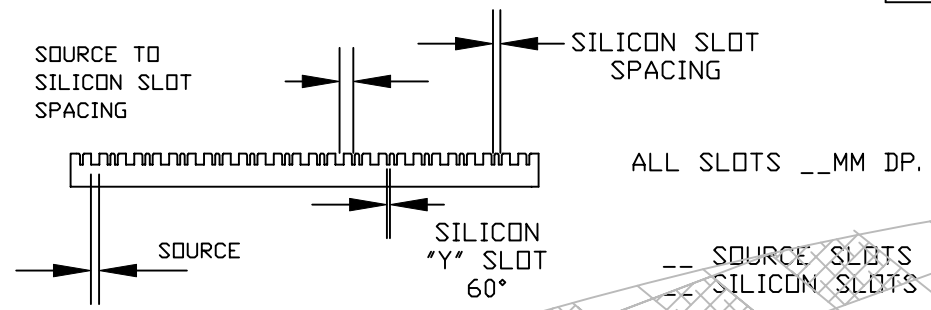
TOLERANCES	
DECIMAL INCHES	MILLIMETERS
X.X = +/- .050	X = +/- .1
X.XX = +/- .010	X.X = +/- .5
X.XXX = +/- .005	X.XX = +/- .15
ANGULARITY +/- 1°	

PROPRIETARY

THE INFORMATION CONTAINED HEREIN IS THE PROPERTY OF UNITED SILICA PRODUCTS INC., AND MAY NOT BE REPRODUCED OR DISCLOSED IN WHOLE OR IN PART WITHOUT THE WRITTEN PERMISSION OF UNITED SILICA PRODUCTS INC.

UNITED SILICA PRODUCTS, INC. 3 PARK DRIVE, FRANKLIN, NEW JERSEY 07416 PH (973) 209-8854 FAX (973) 209-8864 E-MAIL quartzsales@unitedsilica.com		
TITLE HIGH PROFILE		
CUST.	DWG NO.	REV.
MATERIAL		DRAWN BY
SCALE NONE		APPROVED BY
SHEET	DATE	

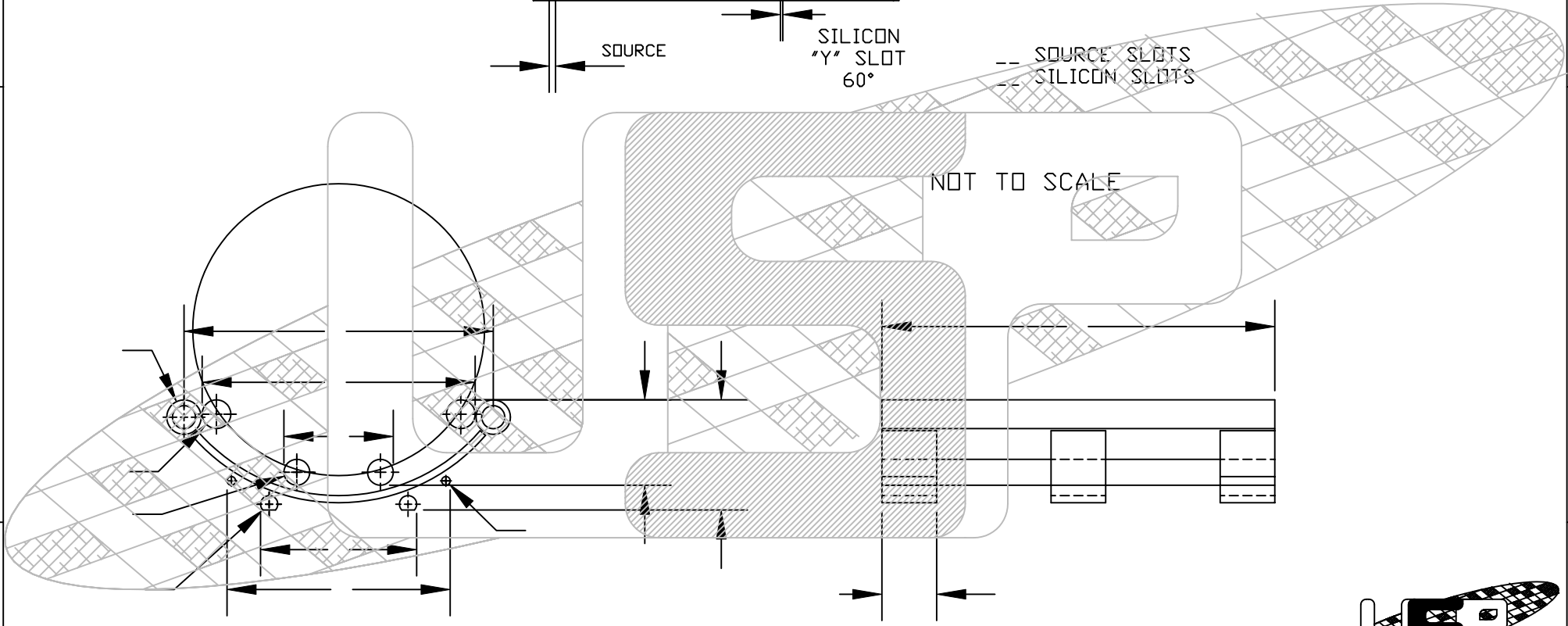
REVISIONS				
ZONE	REV.	DESCRIPTION	APPROVED	DATE



ALL SLOTS __MM DP.

-- SOURCE SLOTS
-- SILICON SLOTS

NOT TO SCALE



UNLESS NOTED BREAK ALL EDGES 0.010" MINIMUM

PROPRIETARY
THE INFORMATION CONTAINED HEREIN IS THE PROPERTY OF UNITED SILICA PRODUCTS INC., AND MAY NOT BE REPRODUCED OR DISCLOSED IN WHOLE OR IN PART WITHOUT THE WRITTEN PERMISSION OF UNITED SILICA PRODUCTS INC.
FILE NAME:TITLEB.DWG REV.1

TOLERANCES	
DECIMAL INCHES	MILLIMETERS
X.X = +/-0.1	X = +/- 1
X.XX = +/-0.02	X.X = +/-0.5
X.XXX = +/-0.010	X.XX = +/-0.25
ANGULARITY +/- 1°	
FRACTIONS +/-1/8"	
QTZ. TUBE PER GE STD. TOL.	

UNITED SILICA PRODUCTS, INC.
3 PARK DRIVE, FRANKLIN, NEW JERSEY 07416
PH (973) 209-8854 FAX (973) 209-8864
E-MAIL quartzsales@unitedsilica.com

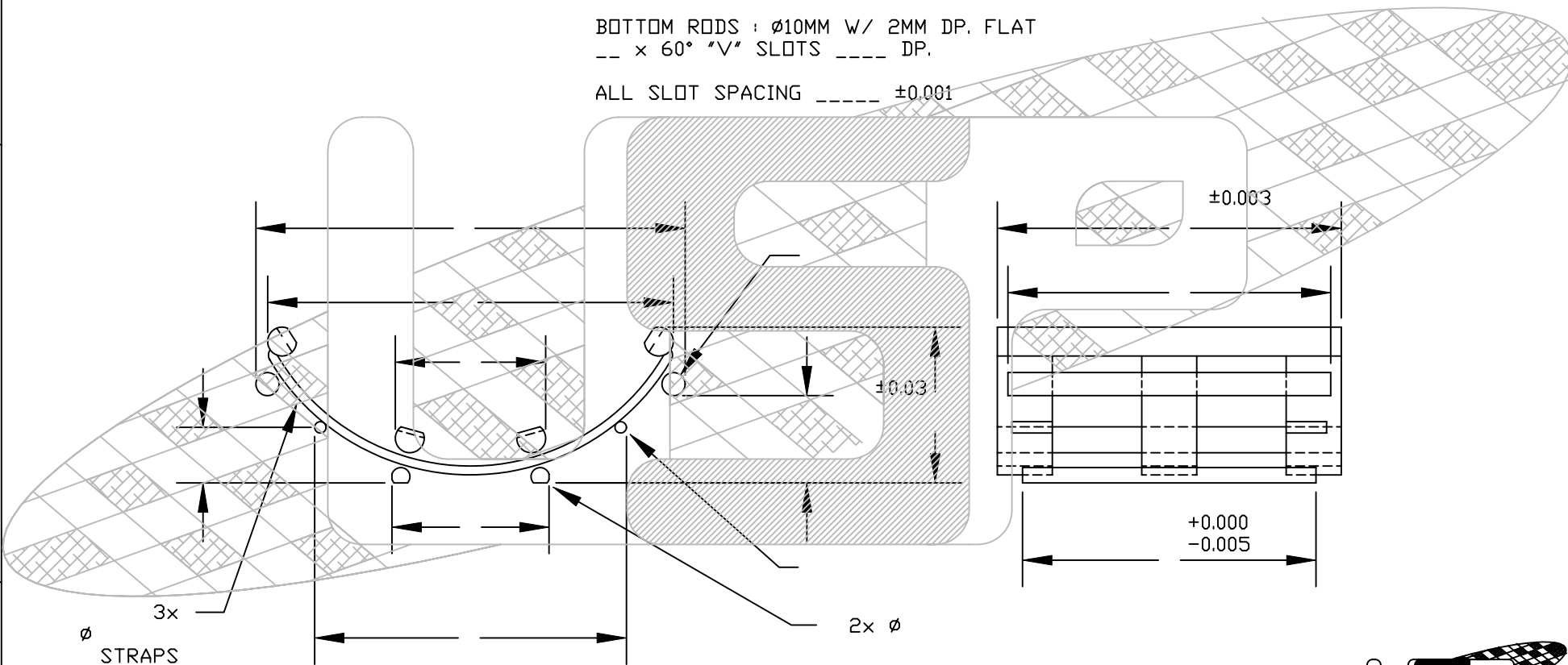
TITLE SOLID SOURCE BOAT		
CUST.	DWG NO.	REV.
MATERIAL		DRAWN BY
SCALE		APPROVED BY
SHEET	DATE	

REVISIONS				
ZONE	REV.	DESCRIPTION	APPROVED	DATE

TOP RODS : $\phi 10\text{MM}$ W/ 1MM DP. FLAT
 -- x 60° "Y" SLOTS, ---- ± 0.002 WIDE ---- DEEP

BOTTOM RODS : $\phi 10\text{MM}$ W/ 2MM DP. FLAT
 -- x 60° "V" SLOTS ---- DP.

ALL SLOT SPACING ---- ± 0.001



ϕ 3x
 STRAPS
 0.75" WIDE



UNLESS NOTED BREAK ALL EDGES 0.010" MINIMUM

PROPRIETARY

THE INFORMATION CONTAINED HEREIN IS THE PROPERTY OF UNITED SILICA PRODUCTS INC., AND MAY NOT BE REPRODUCED OR DISCLOSED IN WHOLE OR IN PART WITHOUT THE WRITTEN PERMISSION OF UNITED SILICA PRODUCTS INC.

FILE NAME: TITLE.DWG REV.1

TOLERANCES	
DECIMAL INCHES	MILLIMETERS
X.X = +/- 0.1	X = +/- 1
X.XX = +/- 0.02	X.X = +/- 0.5
X.XXX = +/- 0.010	X.XX = +/- 0.25
ANGULARITY +/- 1°	
FRACTIONS +/- 1/8"	
QTZ. TUBE PER GE STD. TOL.	

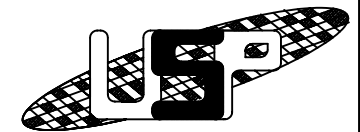
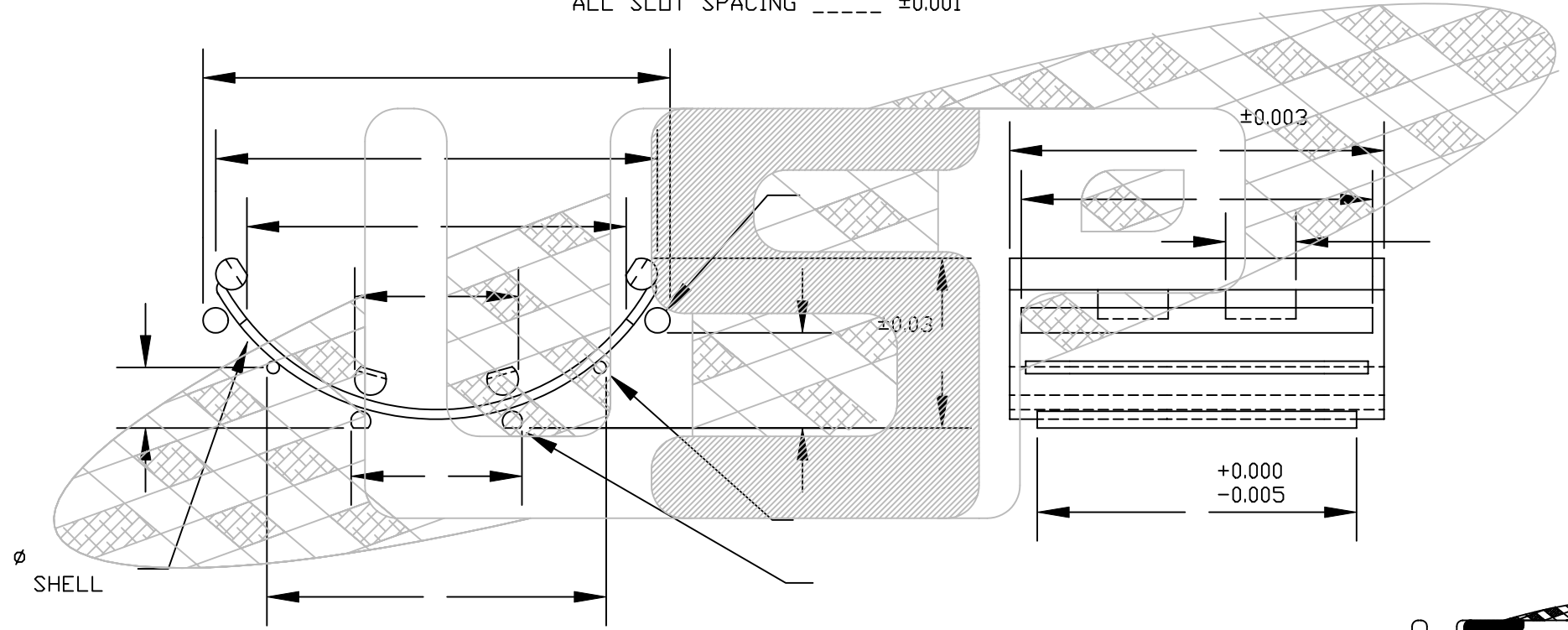
UNITED SILICA PRODUCTS, INC. 3 PARK DRIVE, FRANKLIN, NEW JERSEY 07416 PH (973) 209-8854 FAX (973) 209-8864 E-MAIL quartzsales@unitedsilica.com		
TITLE CONTIG. STRAP CARRIER		
CUST.	DWG NO.	REV.
MATERIAL		DRAWN BY
SCALE		APPROVED BY
SHEET	DATE	

REVISIONS				
ZONE	REV.	DESCRIPTION	APPROVED	DATE

TOP RODS : ϕ 10MM W/ 1MM DP. FLAT
 __ x 60° "Y" SLOTS, ___ \pm 0.002 WIDE ___ DEEP

BOTTOM RODS : ϕ 10MM W/ 2MM DP. FLAT
 __ x 60° "V" SLOTS ___ DP.

ALL SLOT SPACING _____ \pm 0.001



UNLESS NOTED BREAK ALL EDGES 0.010" MINIMUM

PROPRIETARY
 THE INFORMATION CONTAINED HEREIN IS THE PROPERTY OF UNITED SILICA PRODUCTS INC. AND MAY NOT BE REPRODUCED OR DISCLOSED IN WHOLE OR IN PART WITHOUT THE WRITTEN PERMISSION OF UNITED SILICA PRODUCTS INC.

FILE NAME:TITLEB.DWG REV.1

TOLERANCES	
DECIMAL INCHES	MILLIMETERS
X.X = +/-0.1	X = +/- 1
X.XX = +/-0.02	X.X = +/-0.5
X.XXX = +/-0.010	X.XX = +/-0.25
ANGULARITY	+/- 1°
FRACTIONS	+/-1/8"
QTZ. TUBE PER GE STD. TOL.	

UNITED SILICA PRODUCTS, INC. 3 PARK DRIVE, FRANKLIN, NEW JERSEY 07416 PH (973) 209-8854 FAX (973) 209-8864 E-MAIL quartzsales@unitedsilica.com		
TITLE CONTIG. SHELL CARRIER		
CUST.	DWG NO.	REV.
MATERIAL		DRAWN BY
		APPROVED BY
SCALE	SHEET	DATE