

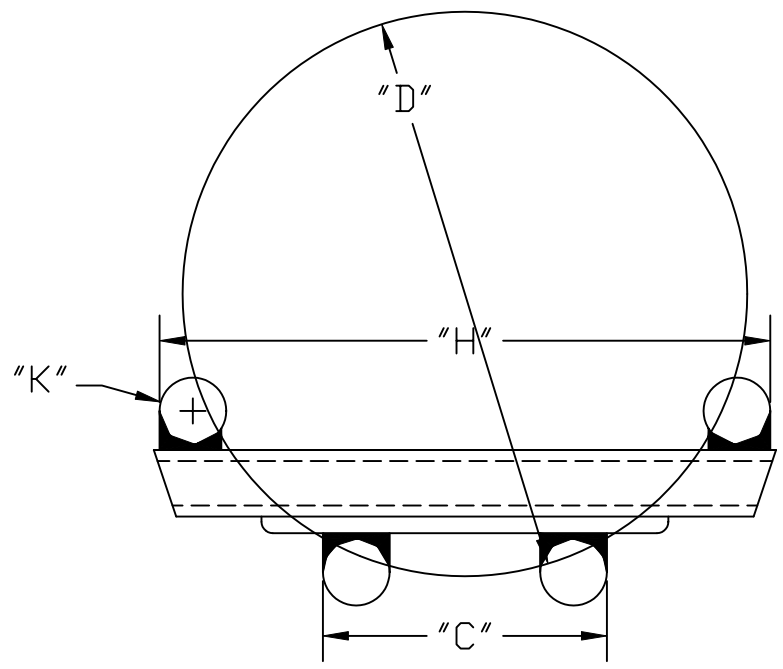
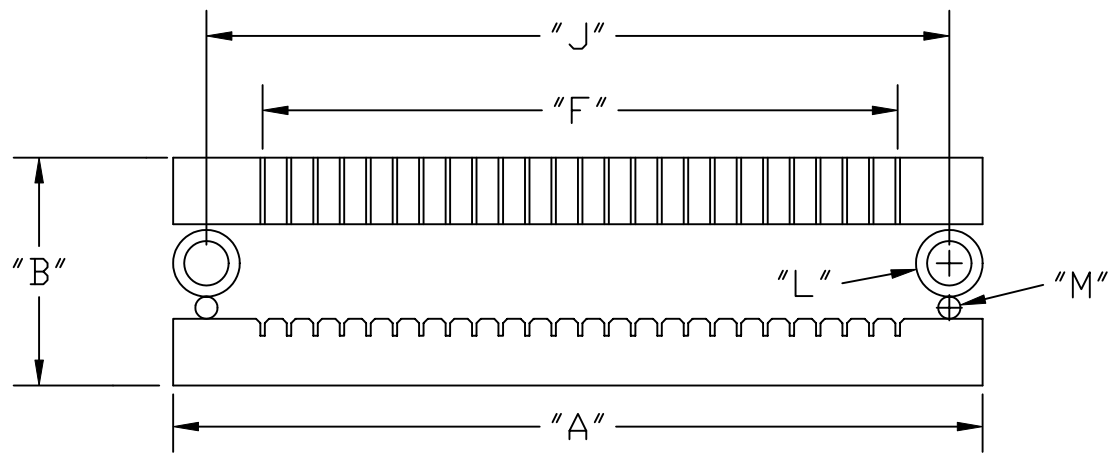
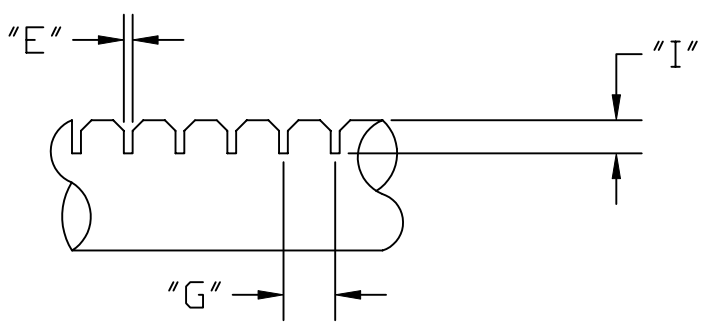
QUARTZ WAFER CARRIERS

Below is a series of quartz wafer carrier configurations that may suit your needs.

Simply print the desired drawing and fill in the dimensions that meet your requirements, then fax or email it to us for review and quote. Remember, this is just a small sample of the products that that we can fabricate. Call and discuss your specific requirements with our engineering department.

<u>PAGE</u>	<u>DESCRIPTION</u>
2	LOW PROFILE CASSETTE
3	SOLID SOURCE BOAT
4	SHELL CARRIER
5	HIGH PROFILE BOAT
6	STRAP BOAT

REVISIONS			
ZONE	REV.	DESCRIPTION	APPROVED DATE



AUTOMATIC TRANSFER YES NO



"A"	"B"	"C"	"D"	"E"	"F"
			WAFER ϕ	SLOT WIDTH	# OF SLOTS
"G"	"H"	"I"	"J"	"K"	"L"
CEN TO CEN				ROD ϕ	TUBE ϕ
"M"					
ROD ϕ					

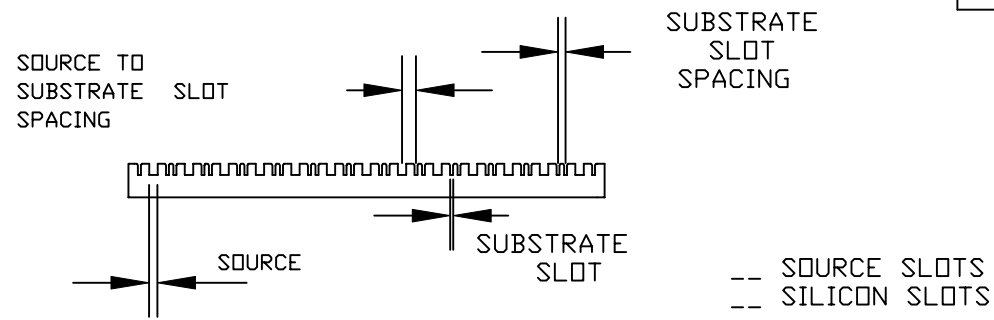
TOLERANCES	
DECIMAL INCHES	MILLIMETERS
X.X = +/- .050	X = +/- .1
X.XX = +/- .010	X.X = +/- .5
X.XXX = +/- .005	X.XX = +/- .15
ANGULARITY +/- 1°	

PROPRIETARY

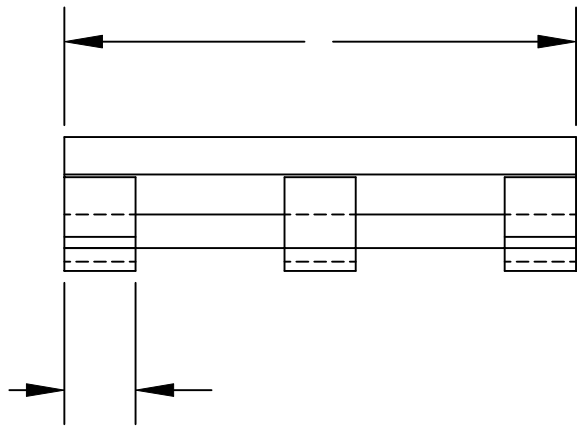
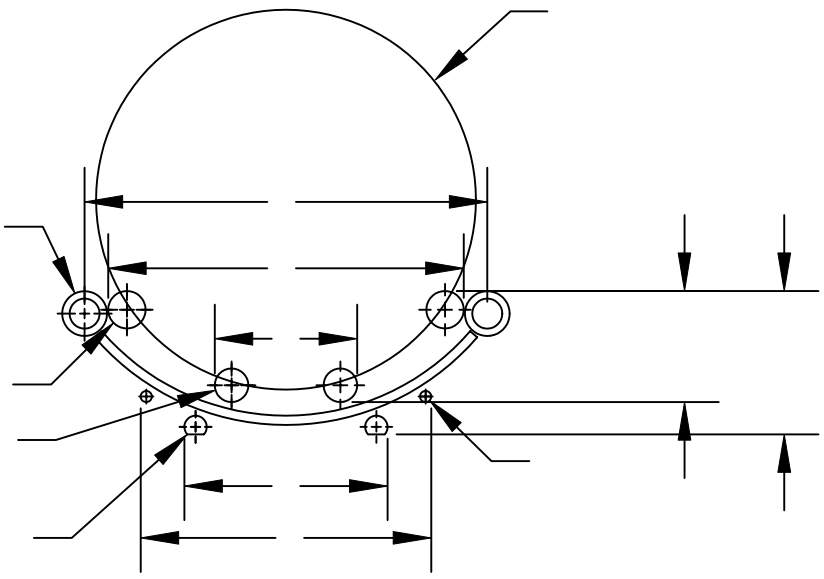
THE INFORMATION CONTAINED HEREIN IS THE PROPERTY OF UNITED SILICA PRODUCTS INC., AND MAY NOT BE REPRODUCED OR DISCLOSED IN WHOLE OR IN PART WITHOUT THE WRITTEN PERMISSION OF UNITED SILICA PRODUCTS INC.

UNITED SILICA PRODUCTS, INC. 3 PARK DRIVE, FRANKLIN, NEW JERSEY 07416 PH (973) 209-8854 FAX (973) 209-8864 E-MAIL sales@unitedsilica.com		
TITLE 25 SLOT LOW PROFILE		
CUST.	DWG NO.	REV.
MATERIAL		DRAWN BY
		APPROVED BY
SCALE NONE	SHEET	DATE

REVISIONS				
ZONE	REV.	DESCRIPTION	APPROVED	DATE



NOT TO SCALE



UNLESS NOTED BREAK ALL EDGES 0.010" MINIMUM

PROPRIETARY
 THE INFORMATION CONTAINED HEREIN IS THE PROPERTY OF UNITED SILICA PRODUCTS INC., AND MAY NOT BE REPRODUCED OR DISCLOSED IN WHOLE OR IN PART WITHOUT THE WRITTEN PERMISSION OF UNITED SILICA PRODUCTS INC.

FILE NAME: TITLE.B.DWG REV.1

TOLERANCES	
DECIMAL INCHES	MILLIMETERS
X.X = +/- 0.1	X = +/- 1
X.XX = +/- .02	X.X = +/- .5
X.XXX = +/- .010	X.XX = +/- .25
ANGULARITY +/- 1°	
FRACTIONS +/- 1/8"	
QTZ. TUBE PER GE STD. TOL.	

UNITED SILICA PRODUCTS, INC.
 3 PARK DRIVE, FRANKLIN, NEW JERSEY 07416
 PH (973) 209-8854 FAX (973) 209-8864
 E-MAIL sales@unitedsilica.com

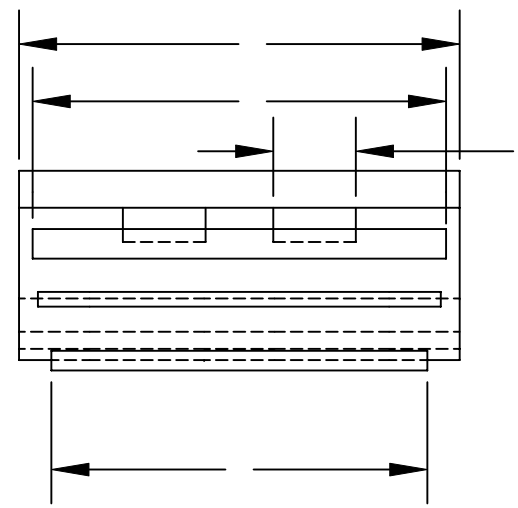
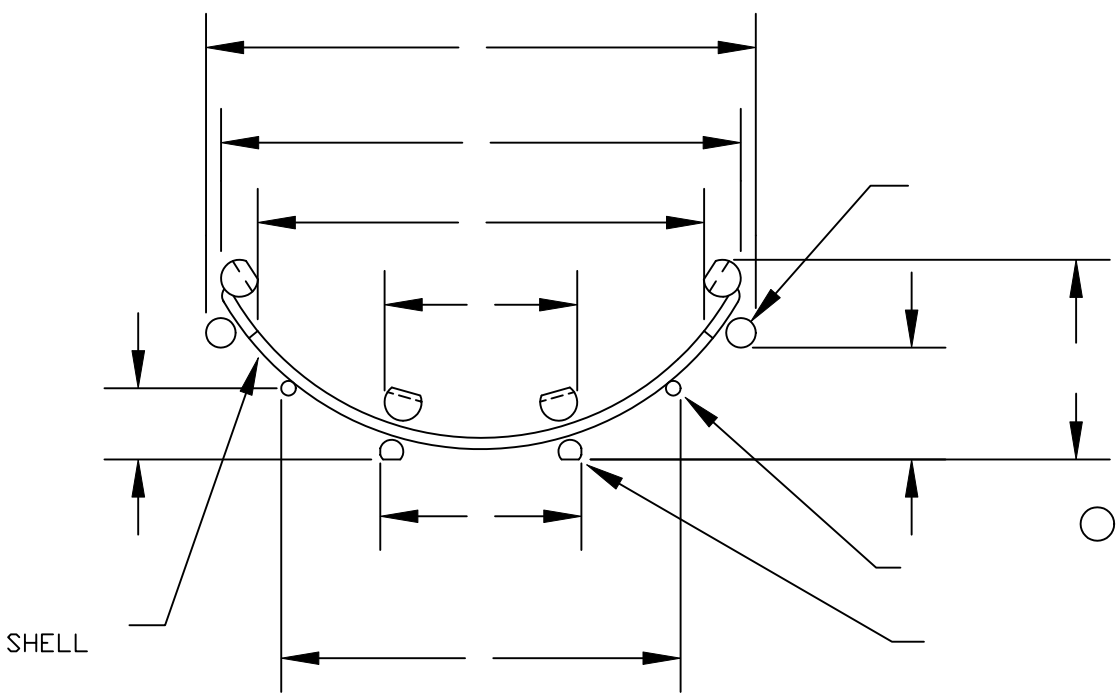
TITLE: SOLID SOURCE BOAT

CUST. _____ DWG NO. _____ REV. _____

MATERIAL _____ DRAWN BY _____

SCALE _____ SHEET _____ APPROVED BY _____ DATE _____

REVISIONS				
ZONE	REV.	DESCRIPTION	APPROVED	DATE
	A	REV. LENGTH	RMK	2/28/06



UNLESS NOTED BREAK ALL EDGES 0.010" MINIMUM

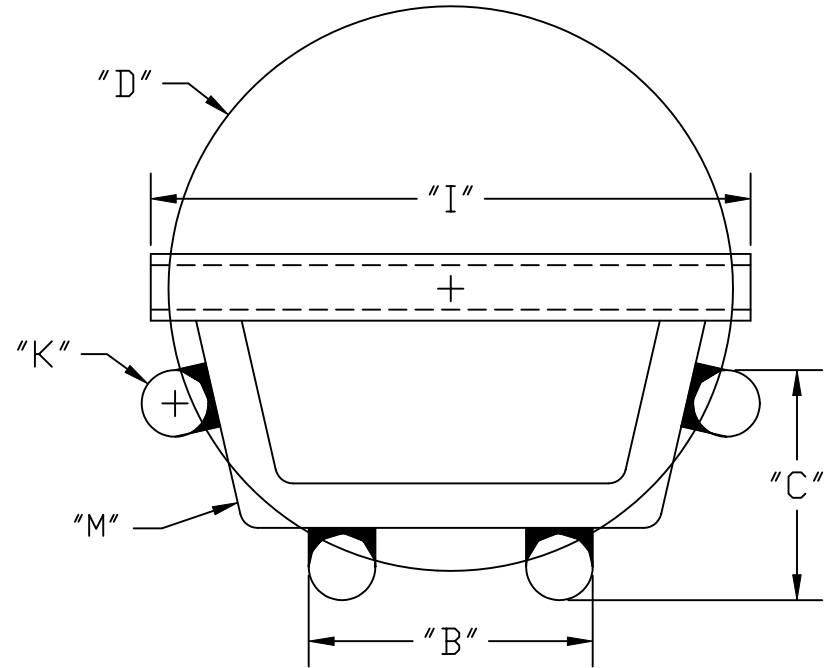
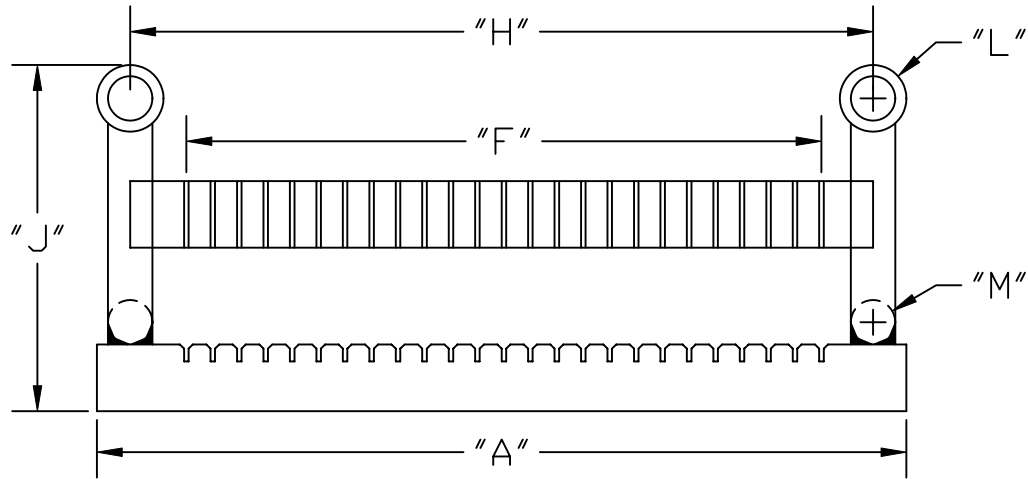
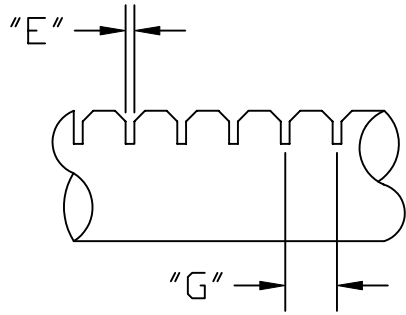
PROPRIETARY
 THE INFORMATION CONTAINED HEREIN IS THE PROPERTY OF UNITED SILICA PRODUCTS INC., AND MAY NOT BE REPRODUCED OR DISCLOSED IN WHOLE OR IN PART WITHOUT THE WRITTEN PERMISSION OF UNITED SILICA PRODUCTS INC.

FILE NAME: TITLE.DWG REV.1

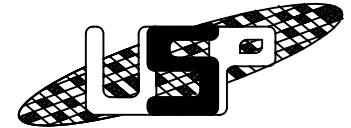
TOLERANCES	
DECIMAL INCHES	MILLIMETERS
X.X = +/-0.1	X = +/- 1
X.XX = +/-0.02	X.X = +/-0.5
X.XXX = +/-0.010	X.XX = +/-0.25
ANGULARITY +/- 1°	
FRACTIONS +/- 1/8"	
QTZ. TUBE PER GE STD. TOL.	

UNITED SILICA PRODUCTS, INC. 3 PARK DRIVE, FRANKLIN, NEW JERSEY 07416 PH (973) 209-8854 FAX (973) 209-8864 E-MAIL quartzsales@unitedsilica.com		
TITLE CONTIG. SHELL CARRIER		
CUST.	DWG NO.	REV.
MATERIAL GE214		DRAWN BY
		APPROVED BY
SCALE	SHEET	DATE

REVISIONS				
ZONE	REV.	DESCRIPTION	APPROVED	DATE



AUTOMATIC TRANSFER YES NO



"A"	"B"	"C"	"D"	"E"	"F"
"G"	"H"	"I"	WAFER ϕ	SLOT WIDTH	# OF SLOTS
CEN TO CEN			"J"	"K"	"L"
"M"				ROD ϕ	TUBE ϕ
ROD ϕ					

TOLERANCES	
DECIMAL INCHES	MILLIMETERS
X.X = +/- .050	X = +/- .1
X.XX = +/- .010	X.X = +/- .5
X.XXX = +/- .005	X.XX = +/- .15
ANGULARITY +/- 1°	
PROPRIETARY	
THE INFORMATION CONTAINED HEREIN IS THE PROPERTY OF UNITED SILICA PRODUCTS INC., AND MAY NOT BE REPRODUCED OR DISCLOSED IN WHOLE OR IN PART WITHOUT THE WRITTEN PERMISSION OF UNITED SILICA PRODUCTS INC.	

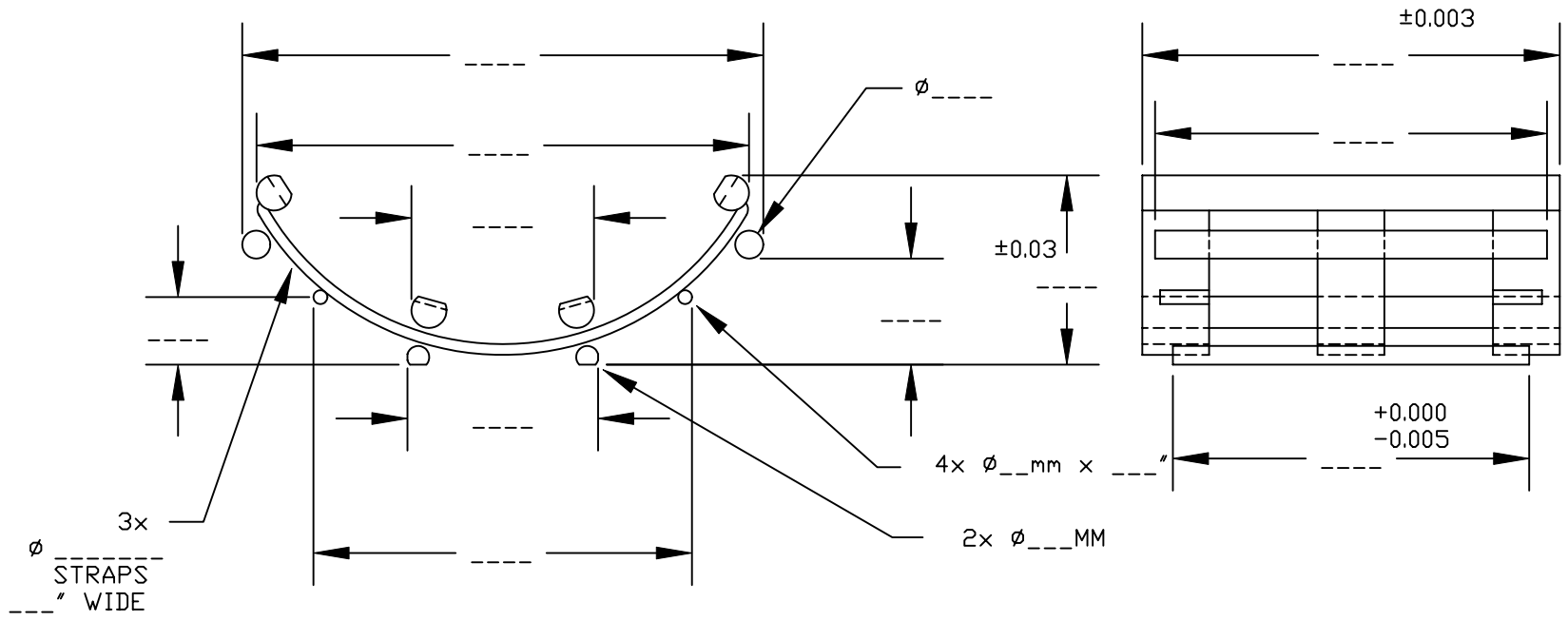
UNITED SILICA PRODUCTS, INC. 3 PARK DRIVE, FRANKLIN, NEW JERSEY 07416 PH (973) 209-8854 FAX (973) 209-8864 E-MAIL sales@unitedsilica.com		
TITLE HIGH PROFILE		
CUST.	DWG NO.	REV.
MATERIAL		DRAWN BY
		APPROVED BY
SCALE	SHEET	DATE
NONE		

REVISIONS				
ZONE	REV.	DESCRIPTION	APPROVED	DATE

TOP RODS : ϕ _____ W/ 1MM DP. FLAT
 __ x 60° "Y" SLOTS, _____ ±0.002 WIDE _____ DEEP

BOTTOM RODS : ϕ _____ W/ 2MM DP. FLAT
 __ x 60° "V" SLOTS _____ DP.

ALL SLOT SPACING _____ ±0.001



UNLESS NOTED BREAK ALL EDGES 0.010" MINIMUM

PROPRIETARY

THE INFORMATION CONTAINED HEREIN IS THE PROPERTY OF UNITED SILICA PRODUCTS INC., AND MAY NOT BE REPRODUCED OR DISCLOSED IN WHOLE OR IN PART WITHOUT THE WRITTEN PERMISSION OF UNITED SILICA PRODUCTS INC.

FILE NAME: TITLE.DWG REV.1

TOLERANCES	
DECIMAL INCHES	MILLIMETERS
X.X = +/- 0.1	X = +/- 1
X.XX = +/- 0.02	X.X = +/- 0.5
X.XXX = +/- 0.010	X.XX = +/- 0.25
ANGULARITY +/- 1°	
FRACTIONS +/- 1/8"	
QTZ. TUBE PER GE STD. TOL.	

UNITED SILICA PRODUCTS, INC.
 3 PARK DRIVE, FRANKLIN, NEW JERSEY 07416
 PH (973) 209-8854 FAX (973) 209-8864
 E-MAIL quartzsales@unitedsilica.com

TITLE CONTIG. STRAP CARRIER, _____ SLOTS

CUST. _____ DWG NO. _____ REV. -0-

MATERIAL GE214 DRAWN BY _____

APPROVED BY _____

SCALE _____ SHEET _____ DATE _____